

ພູມາຕາ
Trombone 1

73



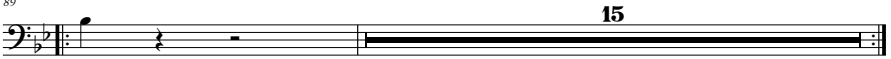
78



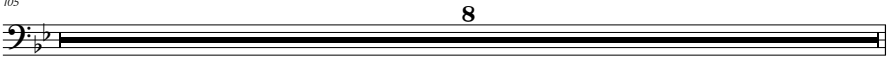
83



89



105



113



120



129



135



140



147



តុរាវ
Trombone 1

153



ທຸມາຕາ
Trombone 1

213



218



225



231



237



242



246



251



257



263

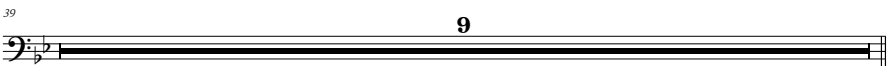


268



พม่าตา
Trombone 1

ส่วนขึ้น ท่อน ๖



พม่าตา
Trombone 1

สองชั้น 4/4

8

15

21

25

29

36

43

50

55

61

68

ທຸມາຕາ
Trombone 1

11

76



84



92



101



107



112



118



123



129



152



159

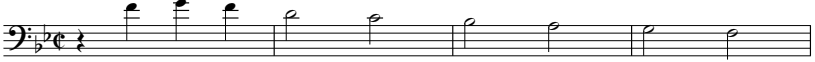


165



พม่าตา
Trombone 1

สองชั้น ร้อย ๖



5



10



15



สองชั้น ร้อย ๓



6



11



16



19

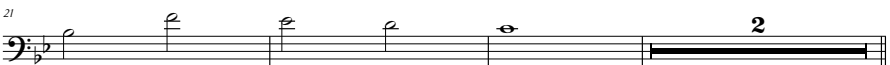
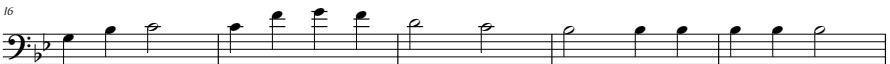


ພາວະ
Trombone 1

ສ່ວນ ກ່ອນ ຂ



ສ່ວນ ກ່ອນ ຂ



ພມ່າຕາ
Trombone 1

ສິ້ນຕອນ ກ່ອນ ◦

Musical score for Trombone 1, measures 1-58. The score is written in bass clef with a key signature of two flats (B-flat and E-flat) and a common time signature (C). The music consists of a series of notes and rests, with some measures containing chords. Measure numbers 5, 9, 16, 23, 29, 36, 41, 46, 53, and 58 are indicated at the start of their respective lines. Measure 41 includes first and second endings. Measure 46 begins with a repeat sign. Measure 53 includes a fermata over a note.

